



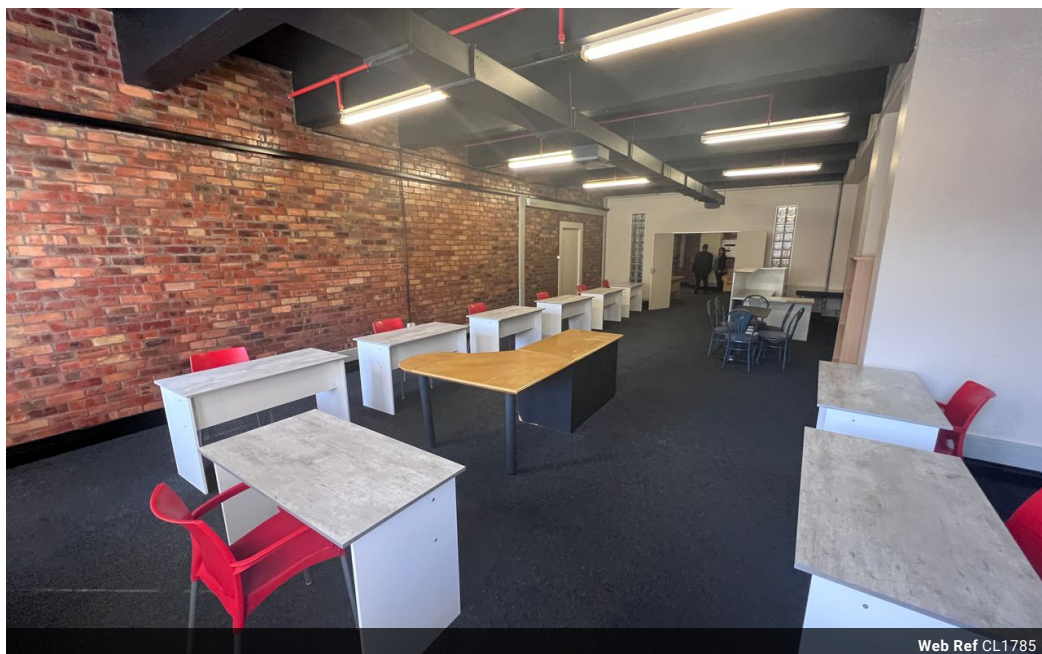
Commercial Division
078 562 6225
commercial@saproperty.com

Contact Cape Town

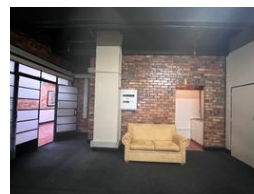
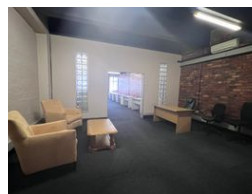
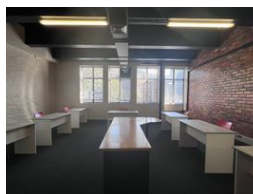
021 2000145

SAPROPERTY.COM House, 9 Boundary
Road, Waterford Place, Century City, Cape
Town

140m² Office To Let in Cape Town City Centre



Web Ref CL1785



R18,200 pm

Gross Monthly Rental R18,200 Excl. VAT

0 0

Office To Let In The Heart Of Cape Town's CBD

Located on Bree Street, one of Cape Town's most popular streets, Manhattan Place is in the centre of the Cape Town CBD and has easy access to the N1 and N2 highways as well as public transport hubs. Surrounded by amenities within walking distance, there are multiple restaurants, coffee shops, and retail stores.

Manhattan Place is a commercial and residential building with office space on multiple floors. There is 24-hour access-controlled security as well as each floor has tag access control. The building has backup generators.

Features

Zoning Commercial

Sizes

Floor Size 140m²

