



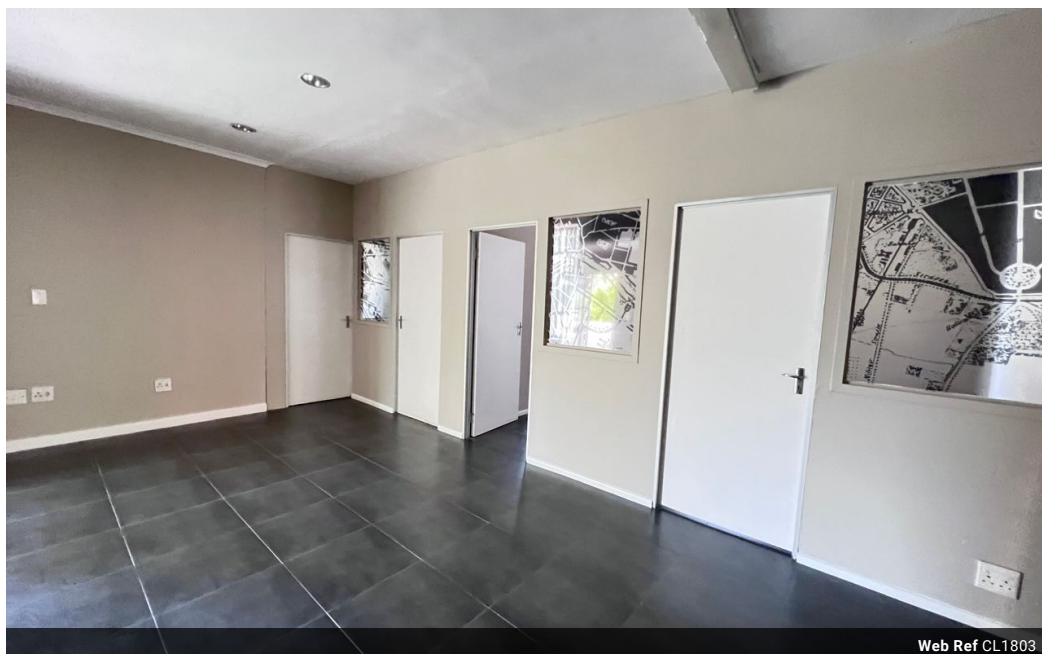
Commercial Division
078 562 6225
commercial@saproperty.com

Contact **Cape Town**

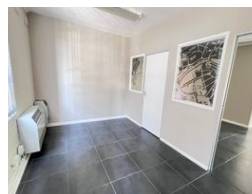
021 2000145

SAPROPERTY.COM House, 9 Boundary
Road, Waterford Place, Century City, Cape
Town

135m² Office To Let in Gardens



Web Ref CL1803



R23,625 pm

Gross Monthly Rental R23,625 Excl. VAT

0 0

Gardens Office To Let

Gardens is the perfect location if you want to be as close to the CBD as possible but don't want to be directly in the heart of it. Gardens in the City Bowl lies at the foot of Table Mountain, has easy access to the N1 and M3, is in walking distance to public transport hubs, a 2-minute drive from Gardens Shopping Centre, and minutes away from Wembley Square. Gardens Business Village is a secure office complex in the middle of Gardens. With tenant parking and an intercom-controlled security system.

This first floor unit is 135sqm.

Features

Zoning Commercial

Sizes

Floor Size 135m²

