



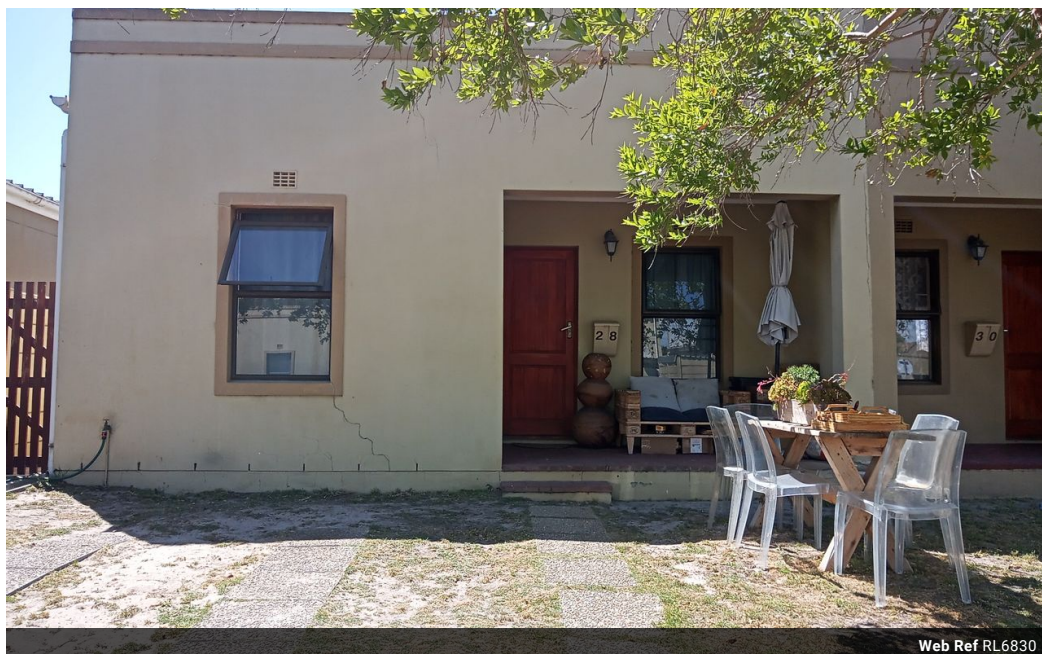
Zaida Hartley
0824718100
zaidahartley@saproperty.com

Contact Cape Town

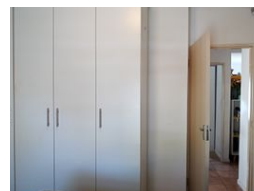
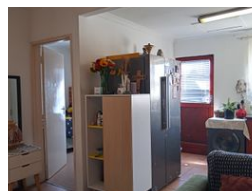
021 2000145

SAPROPERTY.COM House, 9 Boundary Road, Waterford Place, Century City, Cape Town

2 Bedroom Freehold For Sale in Bardale Village



Web Ref RL6830



R800,000

2 1

Monthly Bond Repayment R8,257.51
Calculated over 20 years at 11% with no deposit.

Transfer Costs R25,898.00 **Bond Costs** R19,565.00

These calculations are only a guide. Please ask your conveyancer for exact calculations.

Monthly Levy R600 **Monthly Rates** R564

SOLE AND EXCLUSIVE MANDATE

Enjoy a secure lifestyle within the security and access controlled of Bardale Village phase 2 with 24 hour security and peace of mind of the complex.

This property offers two bedrooms and an open plan kitchen that flows into the lounge area. The kitchen has a built in stove and oven and bottom cupboards for packing. The two bedrooms is carpeted (one with built in cupboards) and the bathroom has a bath with handheld shower overhead , toilet and basin.It has an enclosed yard to enjoy the afternoon sun and it is pet friendly for our furry friends to enjoy.

Bardale village is access controlled and comes with peace of mind living in a 24 hour patrolled estate , electric fencing , 24 hour monitored cameras , easy access to public transport and major highways .
Don't miss this exceptional opportunity to live in a sought after...

Features

Pets Allowed	Yes		
Interior		Exterior	Sizes
Bedrooms	2	Carports / Parkings	2
Bathrooms	1	Security	Yes
Kitchens	1	Pool	No
Recep. Rooms	1	Views	False
Furnished	No		
			Land Size
			148m²

