



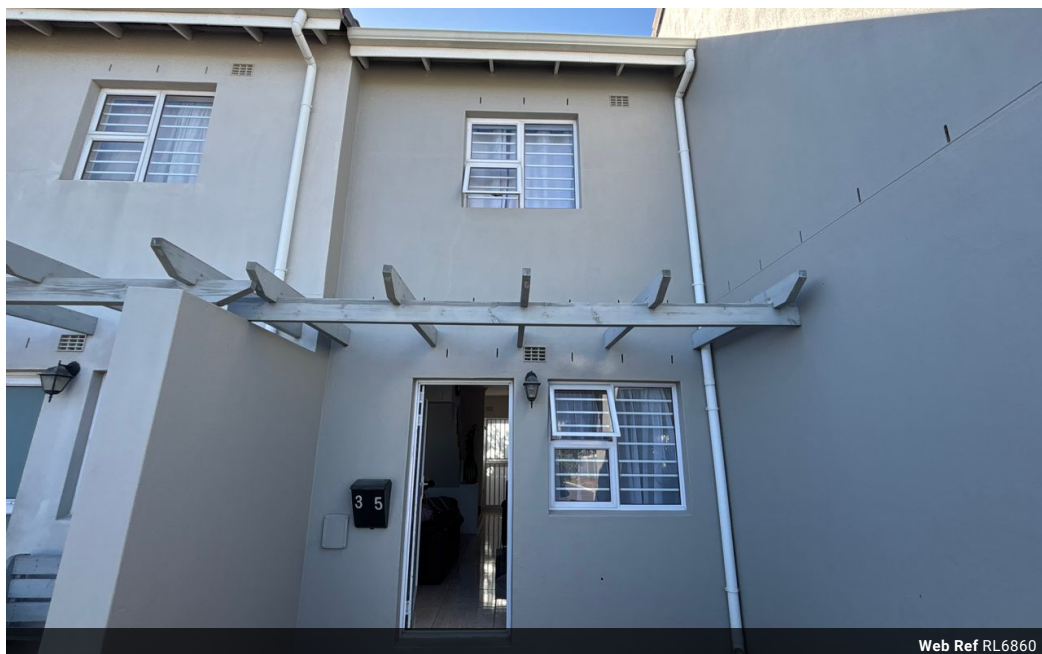
Deirdre Press
0722510727
deirdre.press@saproperty.com

Contact **Cape Town**

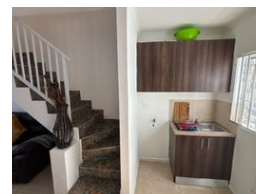
021 2000145

SAPROPERTY.COM House, 9 Boundary
Road, Waterford Place, Century City, Cape
Town

2 Bedroom Freehold For Sale in Bardale Village



Web Ref RL6860



R847,000

2 1

Monthly Bond Repayment R8,742.64

Calculated over 20 years at 11% with no deposit.

Transfer Costs R28,244.00 **Bond Costs** R21,450.00

These calculations are only a guide. Please ask your conveyancer for exact calculations.

Monthly Levy R600 **Monthly Rates** R300

SOLE AND EXCLUSIVE MANDATE

2 Bedroom Townhouse in Bardale Village phase 3

This charming 2-bedroom townhouse is nestled within the secure and family-friendly Bardale Village phase 3. Perfect for first time buyers or young families, this home offers a comfortable and modern living space.

Key features:

- * 2 spacious bedrooms
- * open-plan kitchen
- * Modern kitchen with ample cupboard space
- * 24- hour security and access control

Bardale Village offers a range of amenities including:

- * play parks for children
- Conveniently located near schools, shopping centres, and public transport

Don't miss this opportunity to own your own piece of Bardale Village.

Features

Pets Allowed		Yes			
Interior				Sizes	
Bedrooms	2			Land Size	78m ²
Bathrooms	1				
Kitchens	1				
Recep. Rooms	1				
Furnished	No				
Exterior					
Carports / Parkings	2				
Security	Yes				
Pool	No				
Views	False				