



Tania White
0783843510
tania@saproperty.com

Contact **Cape Town**

021 2000145

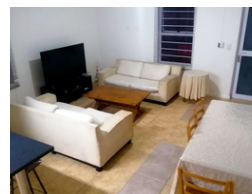
SAPROPERTY.COM House, 9 Boundary Road, Waterford Place, Century City, Cape Town

3 Bedroom House For Sale in Bardale Village



SOLE MANDATE

Web Ref RL6841



R1,199,999

 3  3

Monthly Bond Repayment R12,386.25

Calculated over 20 years at 11% with no deposit.

Transfer Costs R32,749.00 **Bond Costs** R25,220.00

These calculations are only a guide. Please ask your conveyancer for exact calculations.

Monthly Levy R600 **Monthly Rates** R354.3

YOUR NEW HOME AWAITS YOU!!

Welcome to this modern, move in ready 3 bedroom duplex situated in the sought after access control Bardale Village phase 3 in Silversands Blue Downs.

DOWNSTAIRS :

This property features a spacious open plan lounge and kitchen. The lounge has blinds, aluminum windows , burglar bars and the kitchen is fully fitted with loads of kitchen cupboard space with a fitted oven , stove , extractor fan and has a fitted connection for a dishwasher.

There is a room downstairs which is carpeted , no built in cupboards , blinds and currently been used as an office space which could also be used as a guest bedroom. There is also the convenience of a guest toilet which also has a washing machine point.

UPSTAIRS :

The main bedroom is spacious and carpeted , built in cupboards and leads into an ensuite which has a shower , toilet and basin....

Features

Pets Allowed	Yes				
Interior		Exterior		Sizes	
Bedrooms	3	Carports / Parkings	2	Floor Size	100m²
Bathrooms	3	Security	Yes	Land Size	168m²
Kitchens	1	Pool	No		
Recep. Rooms	1	Views	False		
Furnished	No				
Extras					
Open Plan Kitchen open plan lounge ensuite					